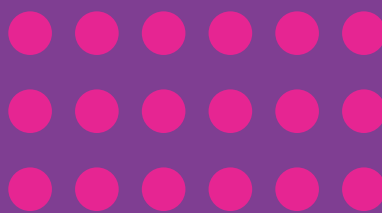


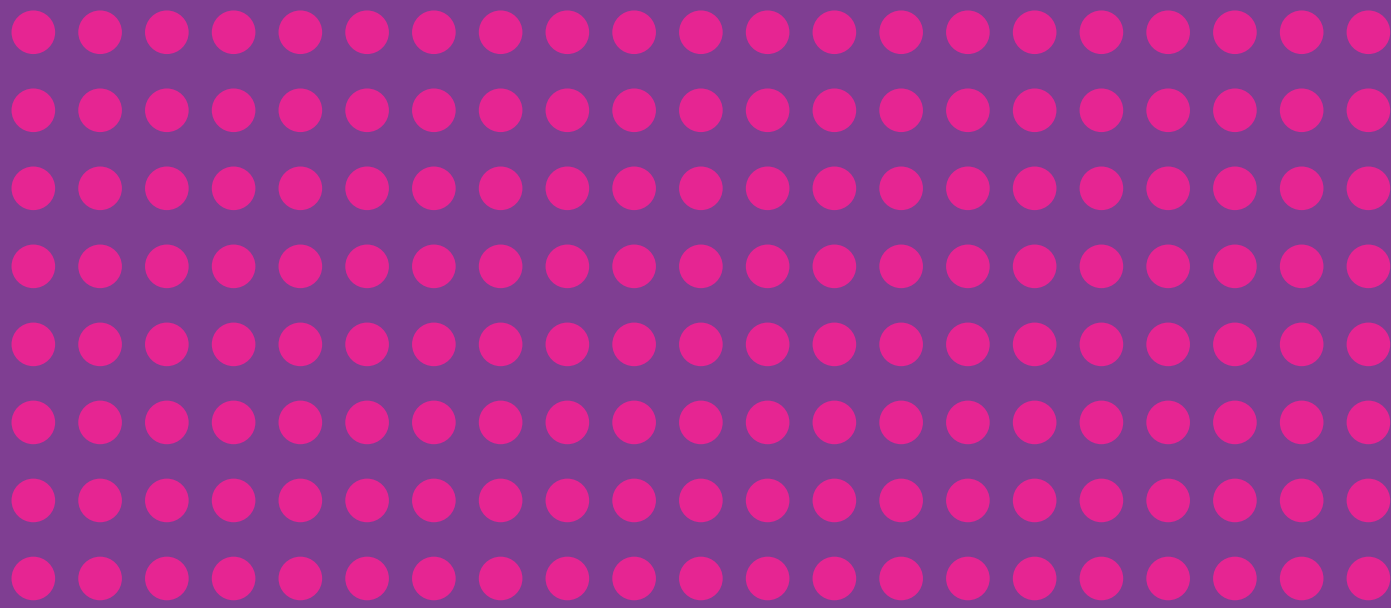
BioBeat'24



Supported by



UK Dementia
Research Institute



Driving solutions in
neurodegeneration
with digital



Thanks to our Partners

Appleyard Lees[®]

COVINGTON



Welcome

The field of digital solutions for neurodegeneration is exploding. BioBeat24 is an opportunity to get an inside track on the latest developments in diagnosis through to care, fundraising and start-ups. The fantastic speakers are leaders in academic research, innovation, regulatory landscape, investment and emerging companies. Their multi-disciplinary contributions will provide an holistic view of the field.

We look forward to your joining today's conversations.



Giovanna Lalli
Director of Strategy and
Operations, LifeArc



Iraida Soria-Espinosa
Senior Business & Innovation
Manager, UK DRI



Miranda Weston-Smith
BioBeat Founder



Sashika Selvackadunco
Central Team Coordinator, UK DRI



Zoe Kourtzi
Professor of Computational
Cognitive Neuroscience
University of Cambridge

“I am passionate about developing and translating evidence-based digital tools to clinical practice and confident that working together across disciplines and sectors we have strong potential to change clinical pathways and enhance patient wellbeing.”

Zoe's research aims to develop predictive models of neurodegenerative disease and mental health with translational impact in early diagnosis and personalised interventions.

Zoe received her PhD from Rutgers University and was a postdoctoral fellow at MIT and Harvard. She was a Senior Research Scientist at the Max Planck Institute for Biological Cybernetics and then a Chair in Brain Imaging at the University of Birmingham, before moving to the University of Cambridge in 2013. She is a Royal Society Industry Fellow, Fellow at the Alan Turing Institute, and the Scientific Director for Alzheimer's Research UK Initiative on Early Detection of Neurodegenerative Diseases (EDoN).

Agenda

13.30-14.00 Registration

14.00-14.05 Welcomes

14.05-14.30 Keynote: AI for better brain health: from the cloud to the clinic

Zoe Kourtzi, Professor of Computational Cognitive Neuroscience,
University of Cambridge

14.30-15.20 Panel: Emerging digital opportunity hot-spots in neurodegeneration

Alison Cave, Chief Safety Officer, MHRA (chair)

Cynthia Sandor, Group Leader, UK Dementia Research Institute at Imperial
College London

Delia Madden, Carer, Care Research & Technology Minder champions

Francesca Cormack, Chief Scientist, Cambridge Cognition

Sarah Daniels, Consultant Therapist - Health and Social Care Lead,
UK Dementia Research Institute Centre for Care Research & Technology at
Imperial College London

15.20-15.50 Tea

15.50-16.40 Panel: Key fundraising trends in digital neurodegeneration solutions

Jia-Yi Har, Partner, Cathay Health (chair)

Caroline Cake, CEO and Co-founder, Neu Health

Inga Deakin, Principal, Molten Ventures

Julie Simmonds, Managing Director, Research Analyst, Healthcare,
Panmure Gordon

Samana Brannigan, Head of Health Technologies, Innovate UK

Tina Marshall, VP Strategic Accounts, IgniteData

16.40-16.45 Wrap up and thanks

16.45-18.15 Drinks and canapes

Emerging digital opportunity hot-spots in neurodegeneration



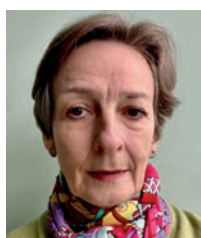
Alison Cave, Chief Safety Officer, MHRA (chair)

Alison joined the Medicines and Healthcare products Regulatory Agency (MHRA) in July 2021 as the Chief Safety Officer with responsibility for the safety of medicines and devices in the UK. She holds a BSc Honours degree and PhD from the University of London and has significant academic research and regulatory experience, the latter at both the European Medicines Agency (EMA) and MHRA. Previously she was Head of Cellular, Developmental and Physiological Sciences at the Wellcome Trust and most recently an Industrial Strategy Challenge Fund Director at UK Research and Innovation.



Cynthia Sandor, Group Leader, UK Dementia Research Institute at Imperial College London

Cynthia is an Edmond J. Safra Lecturer in Parkinson's Disease, a Group Leader at the UK Dementia Research Institute, and a UK Research and Innovation Future Leader Fellow at Imperial College London. Her research interest is in identifying accessible and early biomarkers that can help detect individuals living with Parkinson's or other dementia disorders in the general population. A study from her lab found that data from smart watches could detect Parkinson's years before a clinical diagnosis.



Delia Madden, Carer, Care Research & Technology Minder champions

Delia retired in 2019 from her position as an Executive PA and Office Manager. Her caregiving journey began in 2012 when she started looking after her aunt, diagnosed with dementia, who had a fall. In 2015, her mother was also diagnosed with Alzheimer's disease. Four years ago, Delia and her aunt participated in the Minder Research program, trialing home technology. She currently serves as the Secretary of the Church of England Clergy Stipend Trust, actively participates in her local parish, and pursues her passion for Fine Art at City & Guilds Art School.



Francesca Cormack, Chief Scientist, Cambridge Cognition

Francesca has extensive experience of statistics, cognitive neuroscience and cognitive test development in a range of clinical populations. Since joining Cambridge Cognition in 2014, Francesca has worked to develop novel cognitive testing methodology to support high-frequency, near patient testing using digital technology, providing researchers and healthcare providers with unique insights into cognitive health. Francesca obtained a PhD in Dementia with Lewy Bodies at Newcastle University, followed by post-doctoral and academic positions at University College London and at the Medical Research Council in Cambridge. She maintains academic collaborations focused on neurological disorders, ageing and dementia.



Sarah Daniels, Consultant Therapist - Health and Social Care Lead, UK Dementia Research Institute Centre for Care Research & Technology at Imperial College London

Sarah is an occupational therapist specialising in neurological conditions and neurodegenerative disease. Joining the UKDRI Care Research & Technology Centre at Imperial in 2019, she focuses on translating emerging technologies into practical solutions for those affected by dementia.

Sarah understands the effects of neurodegenerative disease and dementia on the people living with these life changing conditions and brings her experience of NHS and social care service delivery to a multidisciplinary team including clinicians, engineers, and designers. She bridges the gap between research and real-world impact, actively engaging stakeholders and fostering collaboration to embed technologies within health and social care pathways, addressing practical needs of those living with dementia.

Key fundraising trends in digital neurodegeneration solutions



Jia-Yi Har, Partner, Cathay Health (chair)

Jia-Yi Har is a Partner at Cathay Health, a €200M techbio VC fund under Cathay Capital. With nearly two decades of experience, Jia-Yi has a multidisciplinary background encompassing investments, venture building, business management, and academic research. Before joining Cathay, she was responsible for healthcare investments at Partners Group, a private equity firm managing over \$140 billion. Jia-Yi led the Asia Pacific Imaging Software division at Philips Healthcare and successfully built, scaled, and exited several healthtech ventures. As an academic researcher, her focus was on microbial genetics and biophysics. She earned her MSc in Civil & Environmental Engineering from MIT.



Caroline Cake, CEO and Co-founder, Neu Health

Caroline is co-founder and CEO of Neu Health, a spinout from the University of Oxford. Starting with Parkinson's and Dementia, Neu Health has developed a digital platform to help clinicians, patients and carers improve clinical outcomes and quality of life. Caroline was previously Entrepreneur in Residence at Oxford Science Enterprises and Chief Executive Officer at Health Data Research UK (HDR UK). At Public Service Consultants, she was a director advising health organisations, universities and central government departments on strategy, transformation, capability building, and delivery planning. Caroline holds an MBA from Harvard Business School and an MA and MEng from the University of Cambridge.



Inga Deakin, Principal, Molten Ventures

Inga has experience investing in life science and digital health companies emerging from top UK universities. She spent some time in the US, gaining international industry and healthcare experience, as Chief of Staff in a commercial stage genetic molecular diagnostics company, and as Entrepreneur in Residence at Duke University. Her scientific training includes a DPhil and MSc in Neuroscience from the University of Oxford, and a BA from the University of Cambridge.



Julie Simmonds, Managing Director, Research Analyst, Healthcare, Panmure Gordon

Julie has 25 years of experience in Equity Research, covering both UK and continental European companies across a wide range of healthcare subsectors including healthcare services, biotechnology and digital health. She joined Panmure Gordon in November 2015 from Canaccord Genuity. She was No.1 Extel rated 2018 and rated Analyst of the Year 2022 by the Small Cap Network Awards. She is also a panel member for NIHR i4i (invention for innovation), assessing early-stage medical technologies. Julie has a PhD in Microbiology from University of Kent.



Samana Brannigan, Head of Health Technologies, Innovate UK

Samana is the Head of Health Technologies at Innovate UK focussing on MedTech, diagnostics, emerging technologies, engineering biology and data & digital health support for SME's. She leads the Innovate UK flagship Biomedical Catalyst which includes grant funding as well as investment partnership for aligned private investment. Samana previously worked at Invest NI where she managed a portfolio of R&D projects focusing on oncology diagnostics, biomarker development, digital pathology and imaging and targeted drug discovery. She also managed academic-business collaborations in her role as a Business Alliance manager at Queen's University Belfast.



Tina Marshall, VP Strategic Accounts, IgniteData

Tina is a highly experienced commercial leader covering sales, marketing and customer success in the Health Tech/SaaS sector. With over 25 years of experience in the industry, where she nurtured and developed her skillset with Becton Dickinson, KCI Medical (3M), and ICNet (Baxter), she has gone on to consistently launch new businesses, build commercial capability, and achieve first enterprise sales for start-ups, most recently building out the sales and marketing capability for Akrivia Health as Head of Commercial before joining IgniteData.

Entrepreneur Hour with BioBeat24 Partner

Covington & Burling LLP, Life Sciences Legal Specialists - Key legal considerations for early-stage life sciences companies

What are the key legal considerations that you need to be aware of as you scale your business and develop your products? Join our Entrepreneur Hour to learn more about how regulatory, IP/commercial and corporate matters could impact your business. We will host a workshop with practical tips to address the evolving regulatory landscape, considerations on a spin-out/investment as well as licensing and other partnering arrangements.

22 Bishopsgate, London EC2N 4BQ

**Please contact Alex Williams at Covington
(awilliams@cov.com) for further details**

COVINGTON

BioBeat'24

,